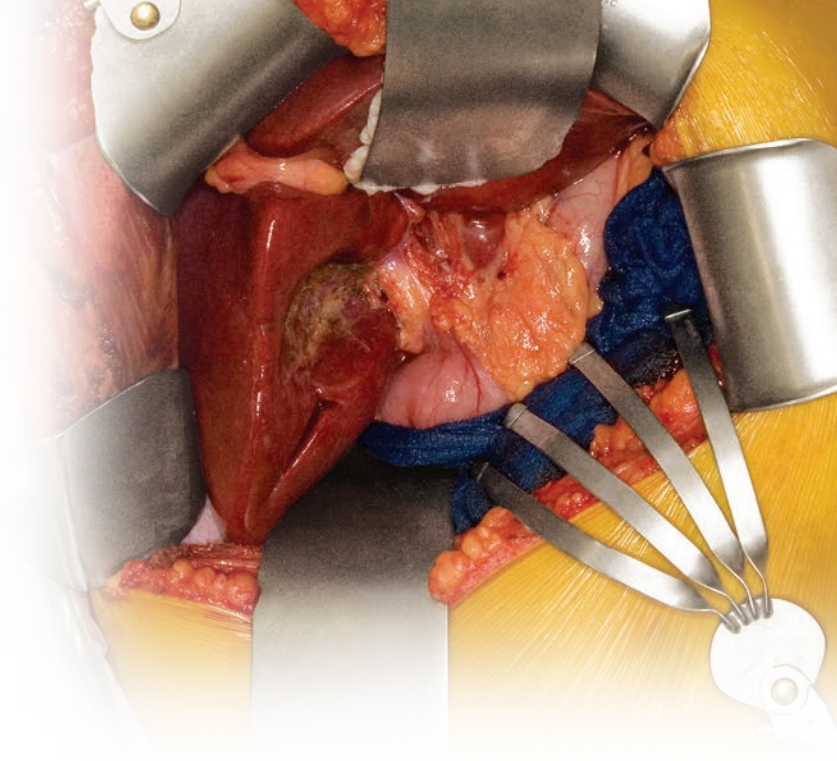


Thompson Retractor

Liver / Oncology System

Uncompromised Exposure for Liver Transplant / Resection

Utilizing a bilateral retractor frame set up, the Thompson Liver / Oncology System provides surgeons with the ability to obtain stable, versatile retraction for liver transplants, liver resections, oncology, and obesity cases. Combined with Thompson Retractor's expansive blade selection, the bilateral set up offers multi-planed retraction and unlimited flexibility for the most complex abdominal and pelvic cases.



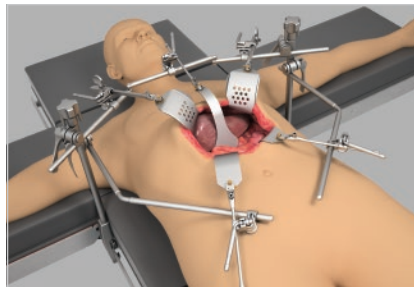
"The Thompson Liver Transplant/Resection System is the best retractor system available."

- Michael Angelis, MD



NEW Non-Slip Balfour Blades

Anatomically designed Non-Slip Balfour blades gently grip tissue to prevent blade slippage during costal margin retraction.



Multi-Dimensional Retraction

Allows for multiple planes of retraction and asymmetrical costal margin retraction, while also providing strong stability for large patients.



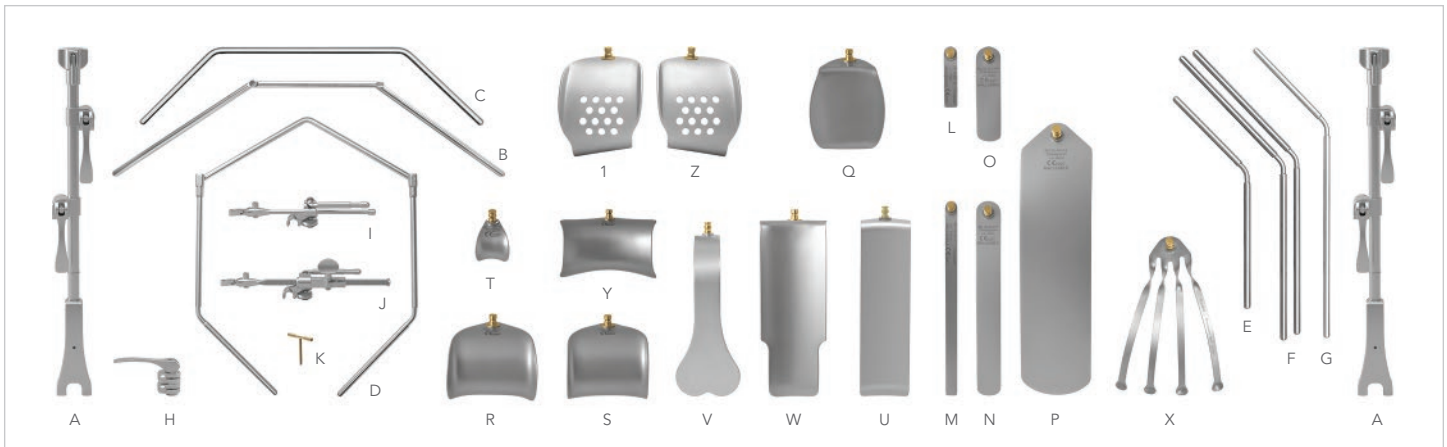
Micro-Adjustable Strength

Micro-adjustable mechanism allows strong, controlled retraction of tissue. Especially helpful for costal margin retraction.



SYSTEM NOTICE:

Radiolucent Liver / Oncology System (#SL82008) also available.



LIVER / ONCOLOGY SYSTEM

#SL82007

REF	QTY	ITEM DESCRIPTION	PART #
A	2	Elite III Rail Clamp with 2 Cam Joints 18"	43903AC
B	1	34" Bilateral Crossbar Hinged 11 1/2" x 8 1/2" x 11 1/2"	41900PH
C	1	Bilateral Crossbar 7 1/4" x 13 1/2" x 7 1/4"	41900F
D	1	Lower Abdominal Bar 20" (14" x 6")	44112SP
	1	Instrument Case	50000BL
E	1	18" Angled Arm (8" x 10") @ 45°	44118N
F	2	24" Angled Arm (11" x 13") @ 45°	44124W
G	1	24" Angled Arm (8" x 16") @ 45°	44124N
H	2	Cam Joint Serrated 1/2" x 1/2"	43112C
I	6	Cam II Clip-on Quick Angle 8"	SL42126WGP
J	2	Micro-Adjustable II Clip-on Quick Angle 10"	SL45006CGP
	2	Micro-Adjustable II Clip-on Quick Angle 15"	SL45006CGRP
K	2	T-Handle	60020
	1	Instrument Case w/Pin Mat 23" x 11" x 3 1/2"	50000G
L	2	Malleable 13mm x 64mm (1/2" x 2 1/2")	SL46115
	2	Malleable 13mm x 152mm (1/2" x 6")	SL46116
M	2	Malleable 13mm x 203mm (1/2" x 8")	SL46117
N	1	Malleable 25mm x 203mm (1" x 8")	SL46118
O	1	Malleable 25mm x 104mm (1" x 4")	SL46118P
	1	Malleable 51mm x 203mm (2" x 8")	SL46122

REF	QTY	ITEM DESCRIPTION	PART #
P	2	Malleable 64mm x 254mm (2 1/2" x 10")	SL46124
	1	Malleable 76mm x 254mm (3" x 10")	SO46124A
	1	Malleable 102mm x 254mm (4" x 10")	SO46124B
	1	Kelly 64mm x 76mm (2 1/2" x 3")	SO46129
Q	2	Kelly 76mm x 89mm (3" x 3 1/2")	SO46130
	1	Balfour [small lips] 70mm x 73mm (2 3/4" x 3")	SO46140C
R	2	Balfour [lips] 83mm x 73mm (3 1/4" x 3")	SO46141
S	2	Balfour [small lips] 83mm x 73mm (3 1/4" x 3")	SO46141C
	2	Balfour [lips] 83mm x 123mm (3 1/4" x 5")	SO46141D
T	4	Balfour [lips] 32mm x 32mm (1 1/4" x 1 1/4")	SL46142
U	1	Richardson 51mm x 178mm (2" x 7")	SL46153
V	1	Harrington 64mm x 152mm (2 1/2" x 6")	SL46160
W	1	St. Marks [with lip] 64mm x 178mm (2 1/2" x 7")	SO46188
X	2	Malleable Finger 152mm (6")	SL46191
	1	Wide Balfour 83mm x 57mm (3 1/4" x 2 1/4")	SO46241A
Y	1	Wide Balfour 100mm x 61mm (4" x 2 3/8")	SO46241B
	1	Wide Balfour 114mm x 63mm (4 1/2" x 2 1/2")	SO46241C
Z	1	Non-Slip Balfour L 77mm x 94mm (3" x 3 3/4")	SO46168C
	1	Non-Slip Balfour R 77mm x 94mm (3" x 3 3/4")	SO46169C
	1	Instrument Case w/Pin Mat 23" x 11" x 3 1/2"	50000G



Visit us online: thompsonsurgical.com · For a Free Trial Call 1-800-227-7543 *

* Free trial valid for U.S. customers only. Customers outside the U.S.A., please call +1-231-922-0177 for availability.

© 2019 Thompson Surgical Instruments, Inc. Traverse City, Michigan.

® S-Lock®, PLA®, and the "T Circle" logomark are Registered Trademarks of Thompson Surgical Instruments, Inc. Patents: tpat.com

Rev B
100819
livoncss

