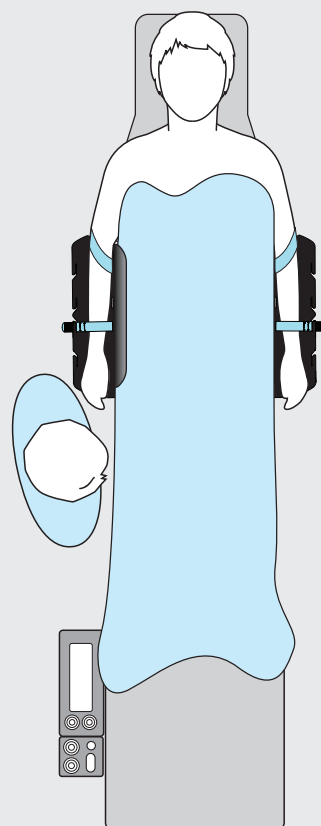


ARMSURE

Adept Medical introduces the ArmSure: the ideal system for arm immobilisation, protecting the sterile field, with the added benefit of reducing scatter radiation. Particularly useful in the increasing number of procedures performed under conscious sedation where patient restlessness can be an issue.

The ArmSure prevents a restless patient from compromising the sterile femoral access site while presenting the forearm for IV lines, anaesthesia, etc., throughout the procedure. The ArmSure gently secures both arms of a supine patient in a comfortable adducted position with soft, easy to install, adjustable straps. The unique design allows the straps to be loose while maintaining arm security and patient comfort.



KEY FEATURES

Gently secures arm

Protects sterile field

Soft pliable straps

Quick set-up

Patient comfort

Scatter radiation
protection

Fits all tables

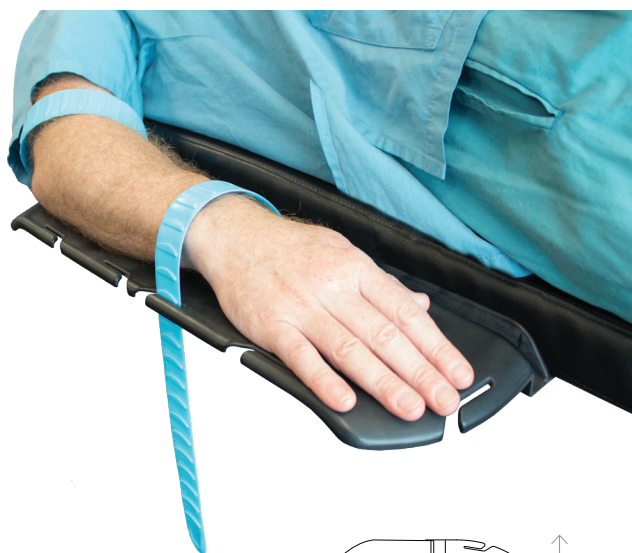
Clinician designed

The ergonomic design comfortably supports the patient's arms at an optimal height, fits all lab table models, works on both sides of the image table and suits a wide variety of patient sizes.

Using the ArmSure is efficient, quick and repeatable as it allows for single person set-up, replacing the conventional arm towel/sheet tuck. It also works with common gel pads for additional patient comfort.

Engineered from radiolucent high-performance plastic for superior rigidity and durability, the ArmSure has been designed and manufactured for long life.

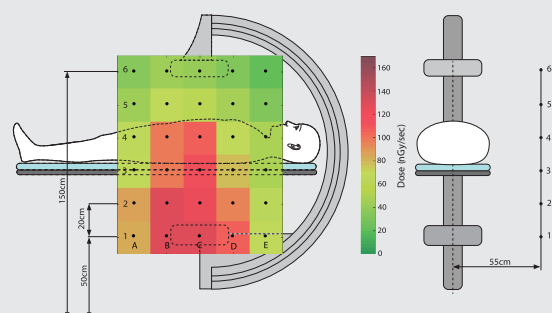
The ArmSure is placed under the sterile drape and is easy to clean. The materials have been selected for excellent resistance to chemical attack from commonly used cleaning products. The straps are made from a soft, durable polyurethane and are also easy to clean.



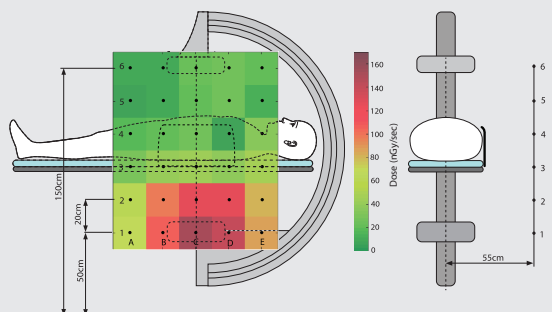
X-RAY SHIELD

The Shield slots into the Arm Support and can be simply adjusted to the optimum position for operator protection from scatter radiation. Results show dose with and without the shield in place. For the full report please visit: www.adeptmedical.com/armsure

Zero Gantry Tilt Operator Dose - No Shield



Zero Gantry Tilt Operator Dose - With Shield



SPECIFICATIONS

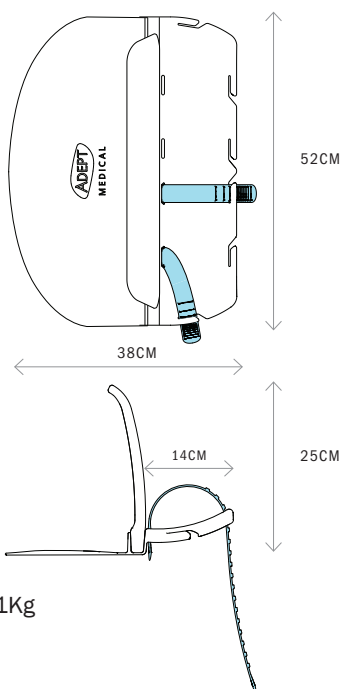
ArmSure Arm Support x 2
Arm Strap x 10
Product code: AM0600

ArmSure Arm Support x 2
Arm Strap x 10
X-Ray Shield
Product code: AM0610

Arm Strap x 10
Product code: AM0620

X-Ray Shield
Product code: AM0630

ArmSure Arm Support Weight: 1Kg
Arm Strap: 0.4Kg
X-Ray Shield Weight: 1.5Kg



EC REP



EC REPRESENTATIVE

Emergo Europe
Prinsessegracht 20
2514 AP The Hague
The Netherlands

For more information please visit
www.adeptmedical.com/armsure

As of 06.19